

Adjusting center level

The type 600 of each form

The type 600 SQ-600



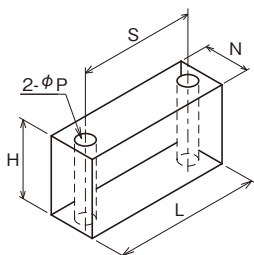
BS10



BS20

Base

for vertical alignment. material A6063
Set screw(SUS304)
10, 20mm for 2 types



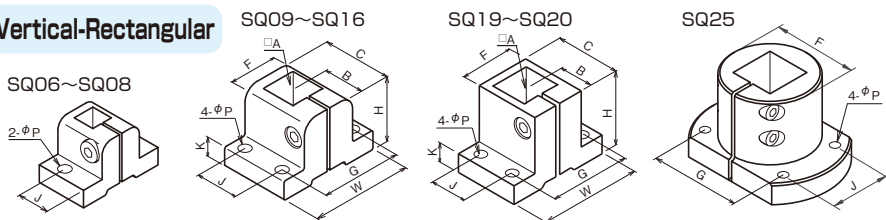
	S	2-φP	L	N	H	Cap screw
BS1008	20	φ3.5	26	8	10	M3×25L
BS1010	24	φ4.5	32	10	10	M4×25L
BS1012	30	φ4.5	38	12	10	M4×25L
BS2012					20	M4×35L
BS1015	38	φ5.5	48	15	10	M5×30L
BS2015					20	M5×40L
BS1020	42	φ5.5	52	20	10	M5×30L
BS2020					20	M5×40L

for fixing strut edge

SQ-601



Vertical-Rectangular



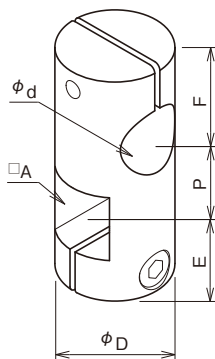
	□A	B	C	H	K	F	W	G	J	2-φP	Cap screw
SQ06-601	□6	9	14	15.5	5.5	12	26	20	9	φ3.5	M3
SQ08-601	□8	12	19	19.5	6.5	16	32	24	12	φ4.5	M4
	□A	B	C	H	K	F	W	G	J	4-φP	Cap screw
SQ09-601	□9	14.5	24	24	7	20	38	30	14	φ4.5	M4
SQ10-601	□10	14.5	24	24	7	20	38	30	14	φ4.5	M4
SQ12-601	□12	15.5	26	24	7	20	38	30	16	φ4.5	M4
SQ13-601	□13	15.5	26	24	7	20	38	30	16	φ4.5	M4
SQ15-601	□15	19	32	31	9	26	48	38	20	φ5.5	M5
SQ16-601	□16	19	32	31	9	26	48	38	20	φ5.5	M5
SQ19-601	□19	21	36	40	10	30	52	42	20	φ5.5	M5
SQ20-601	□20	21	36	40	10	30	52	42	20	φ5.5	M5
SQ25-601	□25	27	54	50	12	50	78	53	35	φ5.5	M5

to fix Rect-shaft or rotate a round shaft

SH-200



Rect-round type



	□A	φd	φD	E	P	F	Cap screw
SH06 -200	□6	φ6	φ13	10.5	9	10.5	M3
SH08 -200	□8	φ8	φ15	13.5	11	13.5	M4
SH09 -200	□9	φ9	φ19	14.5	12	14.5	M4
SH1009-200	□10	φ9	φ19	14.5	13	14.5	M4
SH10 -200		φ10					
SH1210-200	□12	φ10	φ22	15.5	15	15.5	M4
SH12 -200		φ12					
SH1310-200	□13	φ10	φ22	15.5	15	15.5	M4
SH1312-200		φ12					
SH13 -200	□15	φ13	φ25	19	20	19	M5
SH1513-200		φ13					
SH15 -200	□16	φ15	φ25	19	20	19	M5
SH1615-200		φ15					
SH16 -200	□19	φ16	φ29	21.5	24	21.5	M5
SH1915-200		φ15					
SH1916-200	□20	φ16	φ29	21.5	24	21.5	M5
SH19 -200		φ19.1					
SH2019-200	□25	φ19.1	φ41	25	30	22	M6
SH20 -200		φ20					
SH2519-200	□25	φ19.1	φ41	25	30	25	M6
SH2520-200		φ20					
SH25 -200		φ25.1					