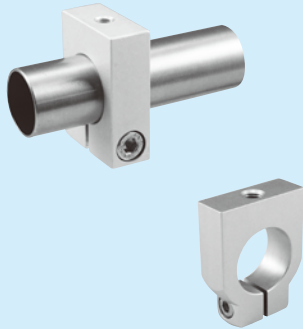


When you use the parts for a clockwise and anticlockwise rotation as a pair, it is easy to clamp a screw.

503, 704, 120

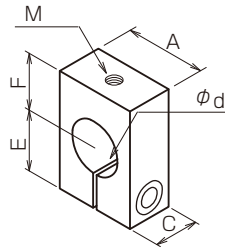
503, 704, 120 or large object attachment with its two points application



120~122

The type 120~122 is different shape.

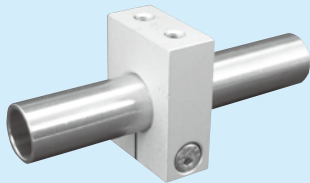
Screw tapped



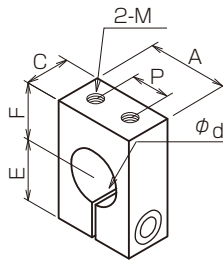
	ϕd	E	F	A	C	M	Cap screw
PJ503	$\phi 13$	15	14	20	11	M3	M4
PJ504						M4	
PJ505						M5	
PL704	$\phi 19.1$	19	19	28	12	M4	M5
PL705						M5	
PL706						M6	
PL707					14	M8	
PH120	$\phi 25.1$	24	24	38	14	M5	M5
PH121						M6	
PH122						M8	
PR120	$\phi 30$	30	30	60	15	M8	M6
PR121						M10	
PT120						M8	
PT121	$\phi 32$	30	30	60	15	M10	M6
PU120	$\phi 35$	35	35	70	20	M8	M6
PU121						M10	

523~526

two screws to firmly fix parts



Two screw tapped



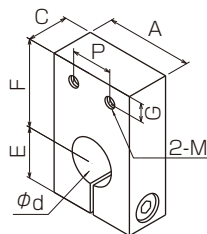
	ϕd	E	F	A	C	P	2-M	Cap screw
PS523	$\phi 6$	10	10	15	8	9	2-M3	M3
PE523	$\phi 8$	13	15	20	10	8	2-M3	M4
PE524							2-M4	
PC523	$\phi 9$	13	15	20	10	8	2-M3	M4
PC524							2-M4	
PF523	$\phi 10$	18	20	28	14	10	2-M3	M5
PF524							2-M4	
PG523	$\phi 12$	15	17	25	12	8	2-M3	M4
PG524							2-M4	
PJ523	$\phi 13$	18	20	28	14	8	2-M3	M5
PJ524							2-M4	
PK524	$\phi 15$	18	20	28	14	10	2-M4	M5
PK525							2-M5	
PN524	$\phi 16$	20	25	30	15	10	2-M4	M5
PN525							2-M5	
PL525	$\phi 19.1$	20	25	30	15	10	2-M5	M5
PL526							2-M6	
PQ526	$\phi 20$	20	25	30	15	18	2-M6	M5

534~536

two screws to firmly fix parts



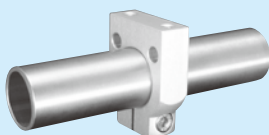
Two screw tapped



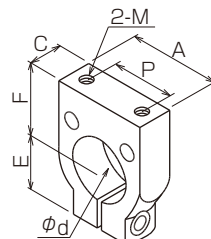
	ϕd	E	F	A	C	P	G	2-M	Cap screw
PE534	$\phi 8$	13	25	20	10	10	5	2-M4	M4
PC534	$\phi 9$								
PF534	$\phi 10$								
PG534	$\phi 12$	15	25	25	12	12			
PJ534	$\phi 13$								
PK535	$\phi 15$	18	32	28	15	15	7	2-M5	M5
PN535									
PL536	$\phi 19.1$	20	38	30	15	18	8	2-M6	
PQ536	$\phi 20$								

126~129

two screws to firmly fix parts $\phi 25$ or more



Two screw tapped



	ϕd	E	F	A	C	P	2-M	Cap screw
PH126	$\phi 25.1$	24	24	38	14	26	2-M5	M5
PH127							2-M6	
PH128		24	35	38	14	26	2-M5	M5
PH129							2-M6	
PR126	$\phi 30$	30	30	45	15	25	2-M8	M6
PT126	$\phi 32$	30	30	45	15	25	2-M8	M6
PU126	$\phi 35$	35	35	50	20	30	2-M8	M6

Dimensional drawing (for equipment-related)
A type with a straight bore size