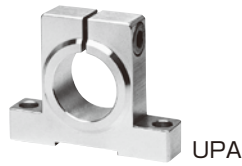


Miyoshi Block

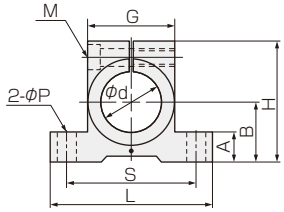
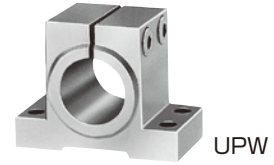
Bearing Holder

- Gap tightening.....Easy to fix a bearing or a shaft
- Force fit.....Fixing requiring precision
- Fit for bearing outer diameter
- Material Duralumin A2017

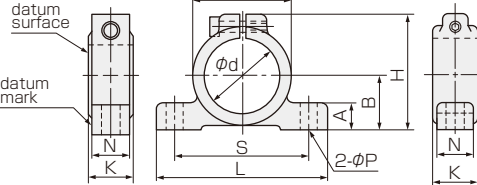
Type UPA (Gap tightening)



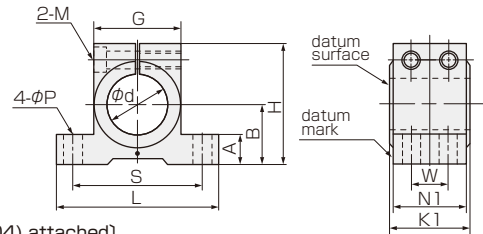
Type UPW (Gap tightening)



UPA-203~UPA-722



UPA-823~UPA-935



(setup screw (SUS304) attached)

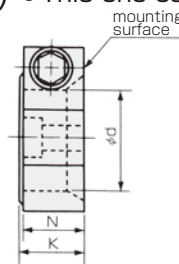
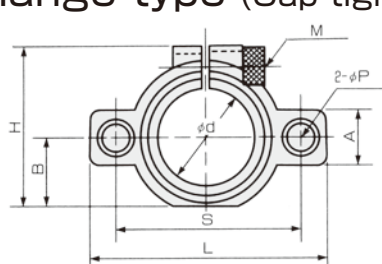
※ Two blocks are paired as one set for type UPA in order to keep the center height accuracy (dimension B) at installation.

Dimension Table

Type	Type	ϕd^{H7}	B ± 0.02	H	A	L	G	S	ϕP	K	K ₁	N	N ₁	W	M Type Tightening screw	M Setup screw
Type UPA	Type UPW															
UPA-203	UPW-203	3	8	16	4	24	10	18	3.5	6	12	5.6	11.6	6	M2.6	M3×10L
UPA-204	UPW-204	4														
UPA-205	UPW-205	5														
UPA-306	UPW-306	6														
UPA-307	UPW-307	7	9	18	5	26	12	20	3.5	7	14	6.0	13.0	7	M2.6	M3×10L
UPA-408	UPW-408	8														
UPA-409	UPW-409	9														
UPA-410	UPW-410	10	11	22	6	32	16	25	3.5	8	16	7.0	15.0	8	M3.0	M3×12L
UPA-511	UPW-511	11														
UPA-512	UPW-512	12														
UPA-513	UPW-513	13														
UPA-514	UPW-514	14	14	28	7	38	20	30	4.5	10	20	8.5	18.5	10	M4.0	M4×15L
UPA-615	UPW-615	15														
UPA-616	UPW-616	16														
UPA-617	UPW-617	17														
UPA-618	UPW-618	18	18	36	9	48	26	38	5.5	12	24	10	22.0	12	M4.0	M5×18L
UPA-719	UPW-719	19														
UPA-720	UPW-720	20														
UPA-721	UPW-721	21														
UPA-722	UPW-722	22	20	40	10	52	30	42	5.5	14	28	12	26.0	14	M5.0	M5×20L
UPA-823	UPW-823	23														
UPA-824	UPW-824	24														
UPA-825	UPW-825	25														
UPA-826	UPW-826	26	20	43	10	64	37	50	6.5	17	-	14	-	-	M5.0	M6×20L
UPA-828	UPW-828	28														
UPA-930	UPW-930	30														
UPA-932	UPW-932	32	25	53	12	75	45	60	8.5	22	-	20	-	-	M5.0	M8×25L
UPA-935	UPW-935	35														

Type FPA flange type (Gap tightening) ● This one can be used to set on the side.

※ Two blocks are paired as one set for type FPA.



(setup screw (SUS304) attached)

Dimension Table

Type	ϕd^{H7}	B	H	A	L	S	ϕP	K	N	M Type Tightening screw	M Setup screw
FPA-305	5	6	17	7	26	20	3.5	7	6.5	M3	M3× 8L
FPA-306	6										
FPA-307	7										
FPA-408	8										
FPA-409	9	8	20	8	34	25	3.5	8	7.5	M3	M3×10L
FPA-410	10										
FPA-511	11										
FPA-512	12										
FPA-513	13	11	27	10	40	30	4.5	10	9.2	M4	M4×12L
FPA-514	14										
FPA-615	15										
FPA-616	16										
FPA-617	17	13	31	12	50	38	5.5	12	11	M5	M5×12L
FPA-618	18										
FPA-719	19										
FPA-720	20										
FPA-721	21	16	38	14	54	42	5.5	14	13	M5	M5×15L
FPA-722	22										