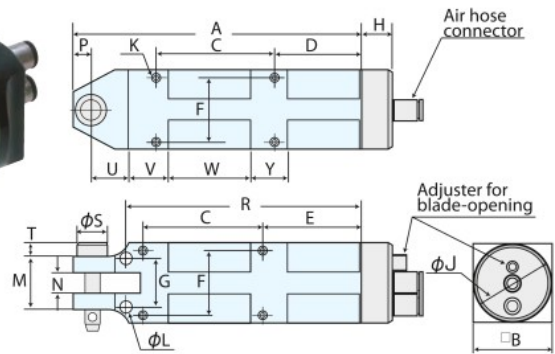


# SQUARE AIR CUTTERS

## MACHINE-FITTING TYPE

### WS Type



#### WS type specification

Model (less blade)	Weight (g)	Air consumption (cm <sup>3</sup> /stroke)	Power N (approx.)	Air pressure (MPa)	Dimensions (mm)																				
					A	B	C	D	E	F	G	H	J	K	L	M	N	P	R	S	T	U	V	W	Y
<b>WS3</b>	88	41	494	0.4~0.5	107	20	43	34	39	16	14	6	20	M3	3.3	20	7	7	89	11	5	3	24	30	13
<b>WS5</b>	179	71	800	0.4~0.5	104	30	43	31	36	24	18	11	30	M3	4.3	20	7	7	84	11	5	13	14	30	13
<b>WS10</b>	309	179	1,420	0.4~0.5	142	36	55	42	47	28	28	18	36	M4	4.3	23	9	7	114	11	5	16	27	40	15
<b>WS20</b>	537	516	3,115	0.5~0.6	170	45	55	65	70	36	30	18	45	M4	5.3	26	12	9	142	11	5	15	31	40	20

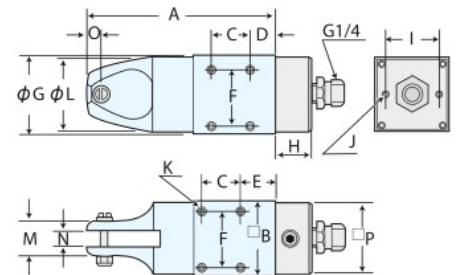
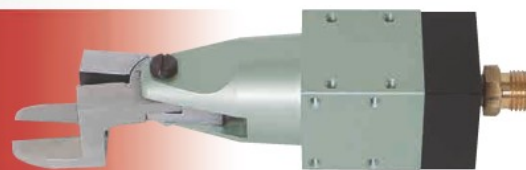
#### WS type Blade cutting capacity

Model	Blade	Copper wire	Steel wire	Plastic
WS3	FW10, FW10S	-	-	1.0
	SW20, SW20S	0.8	0.4	-
WS5	FW1, FW1S	-	-	2.0
	SW2, SW2S	1.0	0.5	-
WS10	FW3, FW3S	-	-	4.0
	SW4, SW4S	1.6	1.0	-
WS20	FW5, FW5S	-	-	7.0
	SW5, SW5S	2.6	2.0	-

Blade	a	b	c
FW10	24	12	2.5~3.0
FW10S	24	12	2.5~3.0
FW1	24	12	3.0~3.5
FW1S	24	12	3.0~3.5
FW3	27	13	5.0~5.5
FW3S	27	13	5.0~5.5
FW5	35	17	8.0~8.5
FW5S	35	17	8.0~8.5
SW20	24	10	2.5~3.0
SW20S	24	12	2.5~3.0
SW2	24	10	3.0~3.5
SW2S	24	12	3.0~3.5
SW4	27	13	5.0~5.5
SW4S	27	13	5.0~5.5
SW5	35	20	8.0~8.5
SW5S	35	17	8.0~8.5

## MACHINE-FITTING TYPE

### MSK Type



#### MSK type specification

Model (less blade)	Weight (g)	Air consumption (cm <sup>3</sup> /stroke)	Power N (approx.)	Air pressure (MPa)	Dimensions (mm)															
					A	B	C	D	E	F	G	H	I	J	K	L	M	N	O	P
<b>MSK10</b>	190	105	1,493	0.4~0.5	87	36	18	10	15	28	35	17	24	M4	M4	33	18	9	7	35
<b>MSK20</b>	340	270	3,490	0.5~0.6	102	45	20	15	20	36	44	17	30	M5	M4	42	24	12	9	44
<b>MSK30</b>	590	631	5,531	0.5~0.6	141	56	27	18	26	46	55	17	40	M6	M5	54	34	17	15	55

Shapes & Dimensions of Standard Blades Please see page 5 Special Blades (Custom-made blades) Please see page 8

#### MSK type Blade cutting capacity

Model	Blade (* Carbide tipped)	Copper wire	Steel wire	Stainless wire	Piano wire	Crimping	Plastic Soft Hard
MSK10	S4, S4S, CR4, EP4	1.6	1.0	-	-	-	-
	Z4*, Z4S, ZCR4, ZEP4	1.6	1.0	0.5	0.5	-	-
	F3, F3S, FD3, F3LS, FEP4	-	-	-	-	-	4.0 2.6
	Y4	-	-	-	-	-	-
MSK20	S5, S5S, P6, CR6, EP6	2.6	2.0	1.6	-	-	-
	Z6*, Z6S, ZCR6, ZEP6	2.6	2.0	1.6	1.0	-	-
	F5, F5S, FD5, F5LS, FEP6	-	-	-	-	-	7.0 5.0
	Y6, K6	-	-	-	-	-	-

#### MSK type Blade cutting capacity

Model	Blade (* Carbide tipped)	Copper wire	Steel wire	Stainless wire	Piano wire	Crimping	Plastic Soft Hard
MSK30	S7P, S7PS, P8P, CR8P, EP10P, P8PS	3.3	2.8	2.0	-	-	-
	Z8P*, Z8PS, ZCR8P, ZEP10P	3.3	2.8	2.0	1.2	-	-
	F9P, F9PS, FD9P, FEP10P	-	-	-	-	-	10.0 6.5
	Y8P, K8P, Y817P	-	-	-	-	-	-
	SH8P	-	-	-	-	-	-
	A8P-1.25, A8P-2.0	-	-	-	-	1.25/2.0	-
	AR8P-1.25, AR8P-2.0	-	-	-	-	1.25/2.0	-