

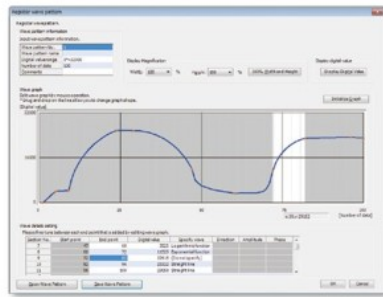
Faster, smoother predefined wave signal output

Output

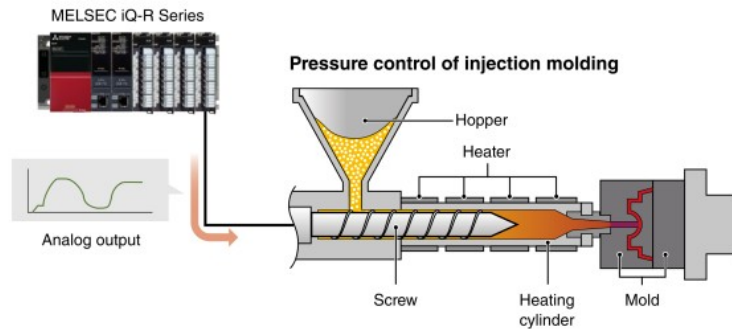
Output pre-registered waveforms

Reduced programming

- The analog output module enables pre-registered waveforms easily, realizing smoother continuous output at high-speed than program
- Registering the waveform in the module enables analog waveform control
- A dedicated analog output program such as for continuous control is not required, further reducing programming time



Engineering software GX Works3 wave output data setup



Analog input module specifications

Item	R60AD4	R60ADV8	R60ADI8	R60ADI8-HA	R60AD8-G	R60AD16-G
Number of analog input points (ch)	4	8	8	8	8	16
Accuracy						
Ambient temperature 25 ± 5 °C	Within ±0.1 %	Within ±0.1 %	Within ±0.1 %	Within ±0.1 %	Within ±0.1 %	Within ±0.1 %
Ambient temperature 0...55 °C	Within ±0.3 %	Within ±0.3 %	Within ±0.3 %	Within ±0.3 %	-	-
Temperature coefficient (ppm/°C)	-	-	-	-	±35	±35
Common						
Conversion speed	80 μs/channel	80 μs/channel	80 μs/channel	-	10 ms/channel	10 ms/channel
Sampling cycle	-	-	-	80 ms/8 channels	-	-
Channel isolation	-	-	-	-	Transformer isolation	Transformer isolation
Absolute max. input	±15 V, 30 mA	±15 V	30 mA	30 mA	±15 V, 30 mA	±15 V, 30 mA
External power supply (V DC)	-	-	-	24	-	-
SIL2 mode	-	-	-	-	●*1	-
HART® communication	-	-	-	●	-	-
Voltage input						
Analog input voltage (V DC)	-10...10	-10...10	-	-	-10...10	-10...10
Digital output value	-32000...32000	-32000...32000	-	-	-32000...32000	-32000...32000
Current input						
Analog input current (mA DC)	0...20	-	0...20	0...20, 4...20 (when using HART® communication)	0...20	0...20
Digital output value	0...32000	-	0...32000	0...32000	0...32000	0...32000
External interface**						
Spring-clamp terminal block	-	-	-	●	-	-
18-point screw terminal block	●	●	●	-	-	-
40-pin connector	-	-	-	-	●	● (2x)

*1. Used when the SIL 2-supporting redundant system is configured.

**2. For more information about external interface, please refer to the options list on page 154 (for applicable options, please refer to the relevant product manual).

CPU
I/O
Analog/ temperature input/ temperature control
Motion/ positioning
High-speed counter/ isolated pulse/ flexible high-speed I/O
FPGA
Network
Advanced information
Energy measuring
Software