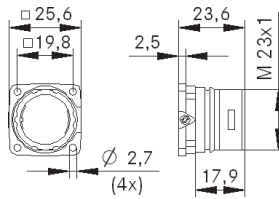




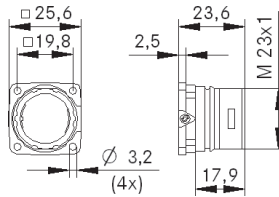
Info

- Colour coding for easy connecting



EPIC® SIGNAL M23 A1 D3.2

Circular connectors for Servo Cables and encoders



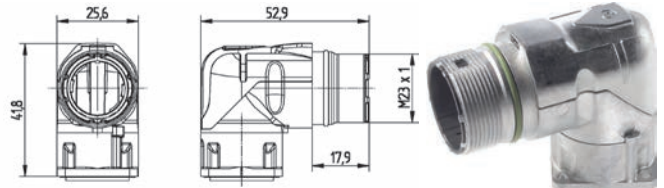
EPIC® SIGNAL M23 A3

Circular connectors for Servo Cables and encoders



Info

- Rotateable with clearly defined adjustment positions



Benefits

EPIC® SIGNAL M23 A1

- Safe fixing with 4 screws
- Permanent vibration protection

EPIC® SIGNAL M23 A1 D3.2

- Housings are very flexible - cable connectors with wide clamping range, receptacle housings for assembling the inserts from the front and rear
- Permanent vibration protection

EPIC® SIGNAL M23 A3

- Housings are very flexible - cable connectors with wide clamping range, receptacle housings for assembling the inserts from the front and rear
- Permanent vibration protection

Application range

- Plant engineering
- Servo drives and servo assemblies
- Measurement and control technology

Technical data

ETIM ETIM 5.0 Class-ID: EC000437
ETIM 5.0 Class-Description: Housing for industrial connectors

Material
Housing: nickel-plated zinc die-casting
Sealing: FPM

IP **Protection rating**
EPIC® SIGNAL M23 A1
IP68 (10h / 1m)
EPIC® SIGNAL M23 A1 D3.2
IP68 (10h / 1m)
EPIC® SIGNAL M23 A3
IP 65

DIN VDE **VDE-tested**
Certified production control:
VDE-REG. no. C24 (according to EN 61984, SELV according to DIN VDE 0100-410 has to be guaranteed)
UL File Number: E249137

Temperature range
-25°C up to +125°C

Article number	Article	Coding	Fastening type	Pieces / PU
Type M23 A1 panel-mount box, front wall mounting				
72004000	M23 A1	black (N)	Ø 2.7 mm (4x)	5
72004010	M23 A1	black (N)	Ø 2.7 mm (4x)	20
72004200	M23 A1	red (+20°)	Ø 2.7 mm (4x)	5
72004210	M23 A1	red (+20°)	Ø 2.7 mm (4x)	20
72004100	M23 A1	blue (-20°)	Ø 2.7 mm (4x)	5
72004110	M23 A1	blue (-20°)	Ø 2.7 mm (4x)	20
Type M23 A1 D3.2 panel-mount box, front wall mounting				
44420018	M23 A1 D3,2	black (N)	Ø 3.2 mm (4x)	5
44420017	M23 A1 D3,2	black (N)	Ø 3.2 mm (4x)	20
44420020	M23 A1 D3,2	red (+20°)	Ø 3.2 mm (4x)	5
44420019	M23 A1 D3,2	red (+20°)	Ø 3.2 mm (4x)	20
44420016	M23 A1 D3,2	blue (-20°)	Ø 3.2 mm (4x)	5
44420015	M23 A1 D3,2	blue (-20°)	Ø 3.2 mm (4x)	20
Type M23 A3 panel-mount connector, angled, rotatable, front wall mounting				
24420055	M23 A3	black (N)	Ø 2.7 mm (4x)	5
24420054	M23 A3	black (N)	Ø 2.7 mm (4x)	20

Photographs are not to scale and do not represent detailed images of the respective products.