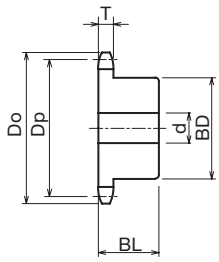
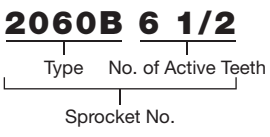




2060B Standard Double Pitch Sprocket for S Rollers B-type

● Order No. Example




- Chain No.C2060H
- Chain Pitch (P)38.10mm
- Roller Link Inner Width (W)12.70mm
- Roller Outside Diameter (Dr)11.91mm
- Tooth Width (T)11.7 mm


-  Carbon Structural Steel
-  High-frequency Hardened Teeth

Type	No. of Active Teeth	Actual No. of Teeth	Outer Diameter Do	Pitch Diameter Dp	Shaft Hole Diameter d			Boss Diameter BD	Boss Length BL	Weight kg	¥	Semi-F ¥
					Prepared Holes	Minimum	Maximum					
2060B	6 1/2	13	88	81.98	14	15	32	53	32	0.73		
	7 1/2	15	101	93.67	16	17	45	66	32	1.05		
	8 1/2	17	113	105.47	16	17	48	73	32	1.33		
	9 1/2	19	126	117.34	16	17	55	83	40	2.03		
	10 1/2	21	138	129.26	16	17	55	83	40	2.23		
	11 1/2	23	150	141.22	16	17	55	83	45	2.56		
	12 1/2	25	162	153.20	18	19	55	83	45	2.81		


* Please refer to P24 to P33 for the Semi-F Series <Complete Product> order method.



and Quantity



Same-day shipping
 Postage



* Since we also manufacture sizes other than those in the catalog, and machine shaft holes/keys/taps, etc., depending on your request, please contact our company's sales office for details.