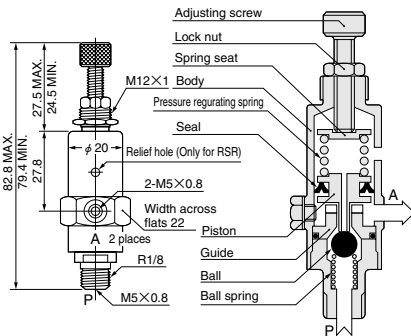


Model
RSR
Regulator (relieving type)

Model
RNR (Semi-standard)
Regulator (non-relieving type)

- Either reduces or maintains pressure to activate pneumatic components in a stable condition.



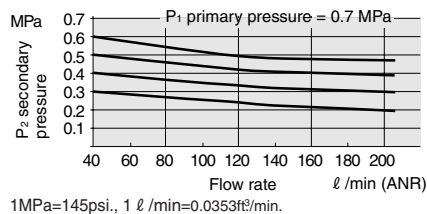
Symbols	
Relieving type	Non-relieving type
RSR	RNR

Specifications

Item	Model	RSR	RNR (semi-standard)
Operation type		Relieving type	Non-relieving type
Port size		P: R1/8 (male thread) or M5x0.8 (female thread) A: M5x0.8 (2 places)	
Maximum operating pressure MPa(kgf/cm ²) [psi]		0.93 (9.5) [135]	
Operating pressure range MPa(kgf/cm ²) [psi]		0.2~0.7 {2.0~7.1} [29~102]	
Mounting direction		Any	
Material	Body	Brass (nickel plated)	
	Seal	Synthetic rubber	
Mass	g [oz.]	108 [3.81]	
Standard equipment	Lock nut(110-21A) Lock washer(100-35)	1 pc. each	

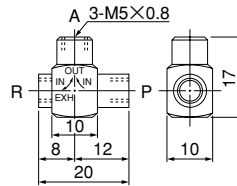
Note: For low-pressure application, consult us.

Flow rate



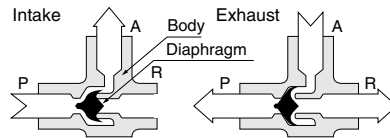
Model
SQE
Quick exhaust valve (also used as a shuttle valve)

- Can be used for quick exhaust of air from air cylinders, air tanks, or circuits. And when used as a shuttle valve, it can be used for changing flows from 2 directions to a single direction.

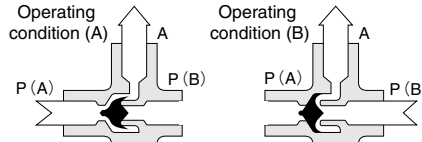


Operating principles

When used as a quick exhaust valve



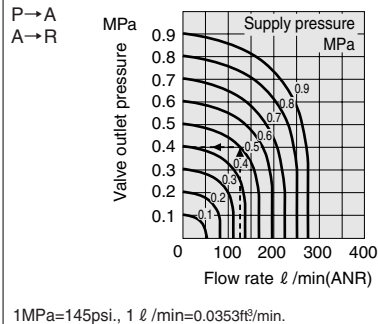
When used as a shuttle valve



Specifications

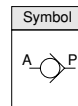
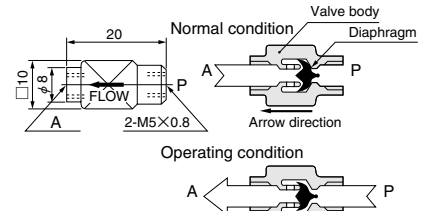
Symbol	Specifications
	Minimum operating pressure 0.03MPa (0.3kgf/cm ²) [4psi]
	Effective area 2.5mm ²
	Flow coefficient Cv 0.12
Material	Body Brass
	Diaphragm Synthetic rubber
Mass	g [oz.] 10 [0.35]

Flow rate



Model
C1
Check valve

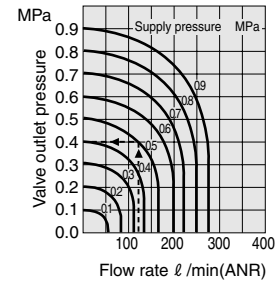
- Enables media to flow in one direction, and prevent it from flowing in the opposite direction.



Specifications

Minimum operating pressure	0.03MPa (0.3kgf/cm ²) [4psi]
Effective area	2.5mm ²
Flow coefficient Cv	0.12
Material	Body Brass (nickel plated) Diaphragm Synthetic rubber
Mass	g [oz.] 7 [0.25]

Flow rate



1MPa=145psi., 1 l/min=0.0353ft³/min.