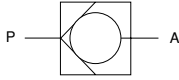


CHECK VALVES

C1, C125, C250, C375, C500

Symbol



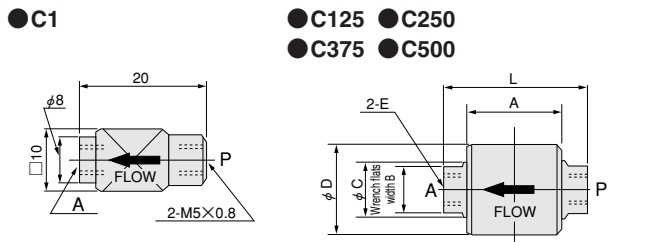
Specifications

Item	Model	C1	C125	C250	C375	C500
Port size		M5×0.8	Rc1/8	Rc1/4	Rc3/8	Rc1/2
Effective area (Cv) mm ²		2.5 [0.12]	6.0 [0.30]	14 [0.72]	74 [3.7]	
Media		Air				
Operating pressure range MPa {kgf/cm ² } [psi.]		0.03~0.9 {0.3~9.2} [4~131]	0.07~0.9 {0.7~9.2} [10~131]			
Proof pressure MPa {kgf/cm ² } [psi.]		1.35 {13.8} [196]				
Operating temperature range (atmosphere and media) °C [°F]		0~60 [32~140]				
Lubrication		Not required				
Mass g [oz.]		7 [0.25]	40 [1.41]	120 [4.23]	260 [9.17]	

Order Code

Port size
1 : M5×0.8
125 : Rc1/8
250 : Rc1/4
375 : Rc3/8
500 : Rc1/2

Dimensions (mm)

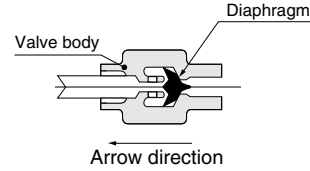


Model	E	L	A	B	C	D
C125	Rc1/8	43	27.5	14	15	26
C250	Rc1/4	62	40	24	26	38
C375	Rc3/8	85	49	32	34	50
C500	Rc1/2	85	49	32	34	50

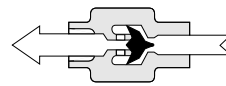
Operating Principles, Major Parts and Materials

C1

● Normal condition

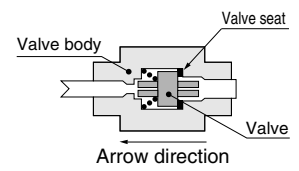


● Operating condition

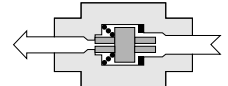


C125, C250, C375, C500

● Normal condition

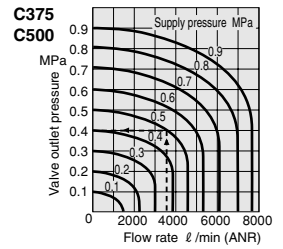
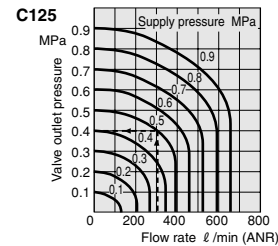
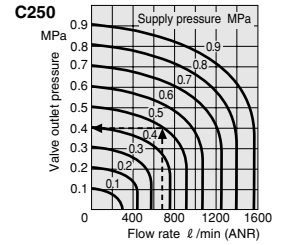
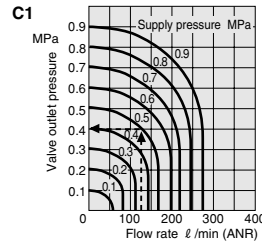


● Operating condition



Parts	Materials			
	Model	C1	C125 C250	C375 C500
Body		Brass	Aluminum alloy (anodized)	
Valve body		Synthetic rubber	Nylon	Aluminum alloy (anodized)
Valve seat		Brass	Synthetic rubber	

Flow Rate



1MPa = 145psi., 1 l /min = 0.0353ft³/min.

How to read the graph (C375, C500)

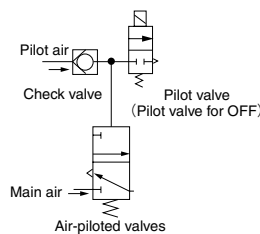
When the supply pressure is 0.5MPa [73psi.] and the flow rate is 3680 l /min [130ft³/min.] (ANR), the valve outlet pressure becomes 0.4MPa [58psi.].

Handling Precautions

Without a pressure difference of 0.07MPa [10psi.] or more between P and A, leaks can occur. When holding pressure in air tanks, etc., reduce the pressure on the P side.

Application Examples

To hold pilot pressure



To hold air pressure in the cylinder

