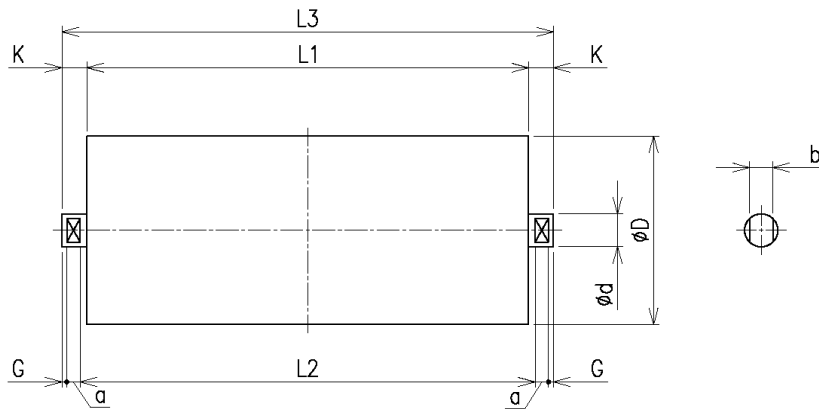
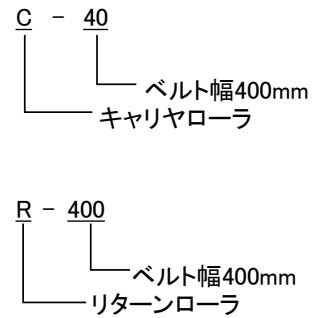


◆外形図



◆型式例



キャリヤローラ

(mm)

| B W | 型式 | D | L1 | L2 | L3 | K | G | a | b | d | BB | 重量 (kg) |
|------|-------|-------|-----|-----|-----|----|---|----|----|----|--------|---------|
| 400 | C-40 | 89.1 | 145 | 153 | 175 | 15 | 3 | 8 | 14 | 20 | 6204ZZ | 1.9 |
| 450 | C-45 | 89.1 | 165 | 173 | 195 | 15 | 3 | 8 | 14 | 20 | 6204ZZ | 2.1 |
| 500 | C-50 | 89.1 | 180 | 188 | 210 | 15 | 3 | 8 | 14 | 20 | 6204ZZ | 2.2 |
| 600 | C-60 | 89.1 | 210 | 218 | 240 | 15 | 3 | 8 | 14 | 20 | 6204ZZ | 2.5 |
| 750 | C-75 | 114.3 | 265 | 273 | 295 | 15 | 3 | 8 | 14 | 20 | 6204ZZ | 4 |
| 900 | C-90 | 114.3 | 315 | 323 | 345 | 15 | 3 | 8 | 14 | 20 | 6204ZZ | 4.6 |
| 1050 | C-105 | 139.8 | 370 | 380 | 410 | 20 | 4 | 11 | 18 | 25 | 6205ZZ | 7.2 |
| 1200 | C-120 | 139.8 | 420 | 430 | 460 | 20 | 4 | 11 | 18 | 25 | 6205ZZ | 8 |
| 1400 | C-140 | 165.2 | 500 | 510 | 540 | 20 | 4 | 11 | 22 | 30 | 6206ZZ | 12.2 |
| 1600 | C-160 | 165.2 | 580 | 590 | 620 | 20 | 4 | 11 | 22 | 30 | 6206ZZ | 13.8 |
| 1800 | C-180 | 165.2 | 650 | 660 | 690 | 20 | 4 | 11 | 25 | 35 | 6207ZZ | 16.8 |
| 2000 | C-200 | 165.2 | 730 | 740 | 770 | 20 | 4 | 11 | 25 | 35 | 6207ZZ | 18.6 |

リターンローラ

(mm)

| B W | 型式 | D | L1 | L2 | L3 | K | G | a | b | d | BB | 重量 (kg) |
|------|--------|-------|------|------|------|----|---|----|----|----|--------|---------|
| 400 | R-400 | 89.1 | 460 | 480 | 502 | 21 | 3 | 8 | 14 | 20 | 6204ZZ | 4.6 |
| 450 | R-450 | 89.1 | 510 | 530 | 552 | 21 | 3 | 8 | 14 | 20 | 6204ZZ | 5 |
| 500 | R-500 | 89.1 | 560 | 580 | 602 | 21 | 3 | 8 | 14 | 20 | 6204ZZ | 5.4 |
| 600 | R-600 | 89.1 | 660 | 680 | 702 | 21 | 3 | 8 | 14 | 20 | 6204ZZ | 6.3 |
| 750 | R-750 | 114.3 | 850 | 880 | 902 | 26 | 3 | 8 | 14 | 20 | 6204ZZ | 11.1 |
| 900 | R-900 | 114.3 | 1000 | 1030 | 1052 | 26 | 3 | 8 | 14 | 20 | 6204ZZ | 12.9 |
| 1050 | R-1050 | 139.8 | 1150 | 1180 | 1210 | 30 | 4 | 11 | 18 | 25 | 6205ZZ | 19.4 |
| 1200 | R-1200 | 139.8 | 1300 | 1330 | 1360 | 30 | 4 | 11 | 18 | 25 | 6205ZZ | 21.8 |
| 1400 | R-1400 | 165.2 | 1530 | 1550 | 1580 | 25 | 4 | 11 | 22 | 30 | 6206ZZ | 33.1 |
| 1600 | R-1600 | 165.2 | 1730 | 1750 | 1780 | 25 | 4 | 11 | 22 | 30 | 6206ZZ | 37.2 |
| 1800 | R-1800 | 165.2 | 2000 | 2040 | 2070 | 35 | 4 | 11 | 25 | 35 | 6207ZZ | 47.1 |
| 2000 | R-2000 | 165.2 | 2200 | 2240 | 2270 | 35 | 4 | 11 | 25 | 35 | 6207ZZ | 51.5 |