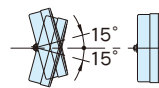
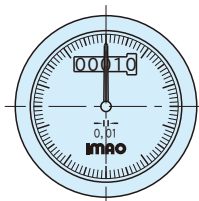
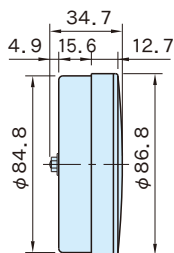


# SZ

# DIGITAL DIAL INDICATORS

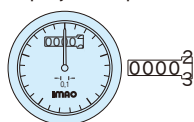


Angular Range of Mounting

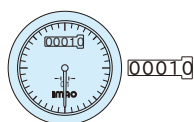
Housing	Window	Dial	Analog Hand
Glass-fiber reinforced polyamide plastic	Acrylic plastic	Aluminum (A1050P)	Black

Spindle Thread Pitch ( $\frac{m}{m}$ )	Part Number		Display after 1st Revolution	Analog Reading		Weight (g)
	Clockwise	Counterclockwise		Minimal Readable Value	No. of Graduations	
1	<b>SZ80R- 1</b>	<b>SZ80L- 1</b>	00010	0.1	100	180
2	<b>SZ80R- 2</b>	<b>SZ80L- 2</b>	00002		20	
2.5	<b>SZ80R- 2.5</b>	<b>SZ80L- 2.5</b>	00002/5		25	
3	<b>SZ80R- 3</b>	<b>SZ80L- 3</b>	00003		30	
4	<b>SZ80R- 4</b>	<b>SZ80L- 4</b>	00004		40	
5	<b>SZ80R- 5</b>	<b>SZ80L- 5</b>	00005		50	
6	<b>SZ80R- 6</b>	<b>SZ80L- 6</b>	00006		60	
8	<b>SZ80R- 8</b>	<b>SZ80L- 8</b>	00008		80	
10	<b>SZ80R-10</b>	<b>SZ80L-10</b>	00010		100	

### Display Examples



Rotative Direction: Clockwise  
Spindle Thread Pitch : 2.5  
Part Number: SZ80R-2.5  
Display after 1 clockwise revolution



Rotative Direction: Counterclockwise  
Spindle Thread Pitch : 4  
Part Number: SZ80L-4  
Display after 2-1/2 counterclockwise revolutions

### Features:

- Designed for analog-digital double reading
- Exclusive handwheels (**SHK** **SHKP**) are available in 4 sizes.
- Counterrotating allows counting down the displayed value.

### Ordering Example

Product Family Code	Rotative Direction	Spindle Thread Pitch
SZ80	R	8
	R = Clockwise	
	L = Counterclockwise	

- Indicators for special thread pitches are available on request.

### Technical Information

For detailed usages, see page of "ALUMINUM INDICATOR HANDWHEELS".