

# CP135

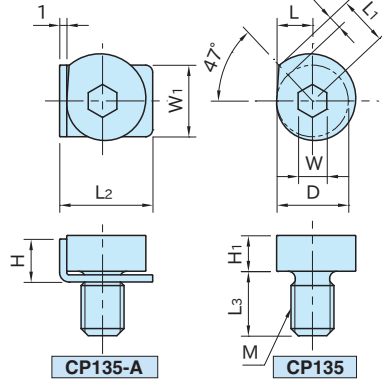
# SPIRAL CAM CLAMPS



CP135-A



CP135



### ★Key Point

Space saving.  
Long clamping stroke.

Spiral Cam Clamp	Clamping Plate
SCM440 steel Black oxide finished HRC33-39	SUS304CSP stainless steel

Part Number	S	L	L <sub>1</sub>	D	M	H <sub>1</sub>	L <sub>3</sub>	W	Allowable Screw Torque (N·m)
CP135-06001	1.8	5	6.8	10	M 6×1	5	9	4	7.4
CP135-08001	2.2	6	8.2	12	M 8×1.25	6	12	5	18
CP135-10001	2.5	7	9.5	14	M10×1.5	7	15	6	35
CP135-12001	2.9	8	10.9	16	M12×1.75	8	18	8	60

### CP135-A (With Clamping Plate)

Part Number	H	W <sub>1</sub>	L <sub>2</sub>	Clamping Force (kN)	Weight (g)
CP135-06001A	6	10	13	2.2	7
CP135-08001A	7	12	15.5	4.7	13
CP135-10001A	8	14	18	7.9	21
CP135-12001A	9	16	20	14	33

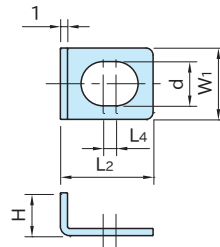
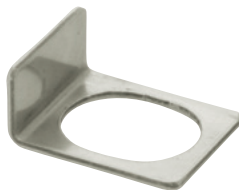
### CP135 (Without Clamping Plate)

Part Number	Clamping Force (kN)	Weight (g)
CP135-06001	2.2	6
CP135-08001	4.7	11
CP135-10001	7.9	19
CP135-12001	14	30

Order Separately

# CP135-P

# CLAMPING PLATES



Clamping Plate
SUS304CSP stainless steel

Part Number	H	W <sub>1</sub>	L <sub>2</sub>	d	L <sub>4</sub>	Weight (g)
CP135-06001P	6	10	13	6.2	1.8	1
CP135-08001P	7	12	15.5	8.2	2.2	2
CP135-10001P	8	14	18	10.2	2.6	2
CP135-12001P	9	16	20	12.2	2.9	3