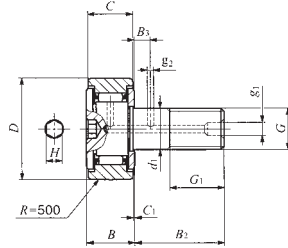


インチ系カムフォア 保持器付き・六角穴付き



スタッド径 4.826 – 22.225 mm

CR...BR

| スタッド径 mm (inch) | 呼び番号 | | | | 質量 (参考) g | D | C | d ₁ | G UNF | G ₁ |
|-----------------------|------------|-----------|--------------|-------------|-----------------|----------------|----------------|----------------|-----------|----------------|
| | シールド形 | | シール形 | | | | | | | |
| | 球面外輪 | 円筒外輪 | 球面外輪 | 円筒外輪 | | | | | | |
| 4.826 | CR 8 BR | CR 8 B | CR 8 BUUR | CR 8 BUU | 9 | 12.700 (1/2) | 8.731 (11/16) | 4.826 | No.10-32 | 6.350 (1/4) |
| | CR 8-1 BR | CR 8-1 B | CR 8-1 BUUR | CR 8-1 BUU | 10 | 12.700 (1/2) | 9.525 (3/8) | 4.826 | No.10-32 | 6.350 (1/4) |
| 6.350 (1/4) | CR 10 BR | CR 10 B | CR 10 BUUR | CR 10 BUU | 19 | 15.875 (5/8) | 10.319 (13/16) | 6.350 (1/4) | 1/4 - 28 | 7.938 (5/16) |
| | CR 10-1 BR | CR 10-1 B | CR 10-1 BUUR | CR 10-1 BUU | 21 | 15.875 (5/8) | 11.112 (7/16) | 6.350 (1/4) | 1/4 - 28 | 7.938 (5/16) |
| 9.525 (3/8) | CR 12 BR | CR 12 B | CR 12 BUUR | CR 12 BUU | 35 | 19.050 (3/4) | 12.700 (1/2) | 9.525 (3/8) | 3/8 - 24 | 9.525 (3/8) |
| | CR 14 BR | CR 14 B | CR 14 BUUR | CR 14 BUU | 46 | 22.225 (7/8) | 12.700 (1/2) | 9.525 (3/8) | 3/8 - 24 | 9.525 (3/8) |
| 11.112 (7/16) | CR 16 BR | CR 16 B | CR 16 BUUR | CR 16 BUU | 73 | 25.400 (1) | 15.875 (5/8) | 11.112 (7/16) | 7/16 - 20 | 12.700 (1/2) |
| | CR 18 BR | CR 18 B | CR 18 BUUR | CR 18 BUU | 88 | 28.575 (1 1/8) | 15.875 (5/8) | 11.112 (7/16) | 7/16 - 20 | 12.700 (1/2) |
| 12.700 (1/2) | CR 20 BR | CR 20 B | CR 20 BUUR | CR 20 BUU | 132 | 31.750 (1 1/4) | 19.050 (3/4) | 12.700 (1/2) | 1/2 - 20 | 15.875 (5/8) |
| | CR 22 BR | CR 22 B | CR 22 BUUR | CR 22 BUU | 157 | 34.925 (1 3/8) | 19.050 (3/4) | 12.700 (1/2) | 1/2 - 20 | 15.875 (5/8) |
| 15.875 (5/8) | CR 24 BR | CR 24 B | CR 24 BUUR | CR 24 BUU | 225 | 38.100 (1 1/2) | 22.225 (7/8) | 15.875 (5/8) | 5/8 - 18 | 19.050 (3/4) |
| | CR 26 BR | CR 26 B | CR 26 BUUR | CR 26 BUU | 260 | 41.275 (1 5/8) | 22.225 (7/8) | 15.875 (5/8) | 5/8 - 18 | 19.050 (3/4) |
| 19.050 (3/4) | CR 28 BR | CR 28 B | CR 28 BUUR | CR 28 BUU | 365 | 44.450 (1 3/4) | 25.400 (1) | 19.050 (3/4) | 3/4 - 16 | 22.225 (7/8) |
| | CR 30 BR | CR 30 B | CR 30 BUUR | CR 30 BUU | 410 | 47.625 (1 7/8) | 25.400 (1) | 19.050 (3/4) | 3/4 - 16 | 22.225 (7/8) |
| 22.225 (7/8) | CR 32 BR | CR 32 B | CR 32 BUUR | CR 32 BUU | 615 | 50.800 (2) | 31.750 (1 1/4) | 22.225 (7/8) | 7/8 - 14 | 25.400 (1) |
| | CR 36 BR | CR 36 B | CR 36 BUUR | CR 36 BUU | 750 | 57.150 (2 1/4) | 31.750 (1 1/4) | 22.225 (7/8) | 7/8 - 14 | 25.400 (1) |

- 備考1. スタッド径 d₁ が 6.35mm 以下は油穴がありません。その他は、スタッドの外径及び端面に油穴があります。
 2. グリースを封入しています。
 3. 最大静許容荷重については、222回にお問い合わせください。