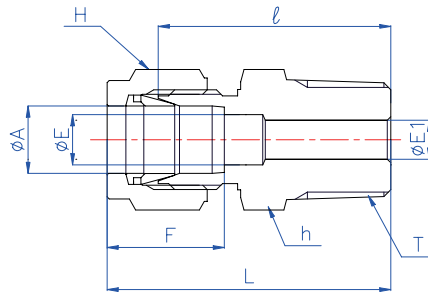


**BI-LoK****MDCT****Male Connector**  
Connects metric tube to female tapered pipe thread

Part No.		A	T	E	E <sub>1</sub>	h	H	l	L	F	
ANSI	NPT	ISO/JIS R	mm	NPT/R	mm	mm	HEX	mm	mm	mm	
MDCT	3M-2	MDCT 3M-R2	3	1/8	2.4	4.8	12	12	23.9	30.6	13.0
MDCT	3M-4	MDCT 3M-R4	3	1/4	2.4	4.8	14	12	29.2	35.9	13.0
MDCT	4M-2	MDCT 4M-R2	4	1/8	2.7	4.8	12	13	24.8	31.6	13.9
MDCT	4M-4	MDCT 4M-R4	4	1/4	2.7	4.8	14	13	30.0	36.8	13.9
		MDCT 4M-R6	4	3/8	2.7	10.4	19	13	32.2	39.0	13.9
MDCT	6M-2	MDCT 6M-R2	6	1/8	4.8	4.8	14	14	26.2	33.7	15.4
MDCT	6M-4	MDCT 6M-R4	6	1/4	4.8	4.8	14	14	30.9	38.4	15.4
MDCT	6M-6	MDCT 6M-R6	6	3/8	4.8	4.8	19	14	32.8	40.3	15.4
MDCT	6M-8	MDCT 6M-R8	6	1/2	4.8	4.8	22	14	37.3	44.8	15.4
MDCT	6M-16		6	1	4.8	4.8	36	14	46.8	54.3	15.4
MDCT	8M-2	MDCT 8M-R2	8	1/8	6.4	4.8	17	17	27.5	35.0	16.3
MDCT	8M-4	MDCT 8M-R4	8	1/4	6.4	6.4	17	17	32.0	39.5	16.3
MDCT	8M-6	MDCT 8M-R6	8	3/8	6.4	6.4	19	17	33.6	41.1	16.3
MDCT	8M-8	MDCT 8M-R8	8	1/2	6.4	6.4	22	17	38.0	45.5	16.3
MDCT	8M-12	MDCT 8M-R12	8	3/4	6.4	6.4	27	17	40.9	48.4	16.3
MDCT	10M-2	MDCT 10M-R2	10	1/8	7.9	4.8	19	19	29.3	37.1	17.3
MDCT	10M-4	MDCT 10M-R4	10	1/4	7.9	7.1	19	19	33.3	41.1	17.3
MDCT	10M-6	MDCT 10M-R6	10	3/8	7.9	7.9	19	19	34.1	41.9	17.3
MDCT	10M-8	MDCT 10M-R8	10	1/2	7.9	7.9	22	19	38.9	46.7	17.3
MDCT	10M-12	MDCT 10M-R12	10	3/4	7.9	7.9	27	19	41.5	49.3	17.3
MDCT	10M-16		10	1	7.9	7.9	36	19	48.1	55.9	17.3
MDCT	12M-4	MDCT 12M-R4	12	1/4	9.5	7.1	22	22	33.3	43.5	22.9
MDCT	12M-6	MDCT 12M-R6	12	3/8	9.5	9.5	22	22	34.3	44.5	22.9
MDCT	12M-8	MDCT 12M-R8	12	1/2	9.5	9.5	22	22	38.9	49.1	22.9
MDCT	12M-12	MDCT 12M-R12	12	3/4	9.5	9.5	27	22	41.7	51.9	22.9
MDCT	12M-16		12	1	9.5	9.5	36	22	47.0	57.2	22.9
MDCT	15M-4	MDCT 15M-R4	15	1/4	12.0	7.1	24	27	34.8	44.8	24.3
MDCT	15M-6	MDCT 15M-R6	15	3/8	12.0	10.4	24	27	35.8	45.8	24.3
MDCT	15M-8	MDCT 15M-R8	15	1/2	12.0	12.0	24	27	39.8	49.8	24.3
MDCT	15M-12	MDCT 15M-R12	15	3/4	12.0	12.0	27	27	41.8	51.8	24.3
MDCT	16M-4	MDCT 16M-R4	16	1/4	12.7	7.1	24	27	34.8	45.0	24.5
MDCT	16M-6	MDCT 16M-R6	16	3/8	12.7	10.4	24	27	35.8	46.0	24.5
MDCT	16M-8	MDCT 16M-R8	16	1/2	12.7	12.7	24	27	39.8	50.0	24.5
MDCT	16M-12	MDCT 16M-R12	16	3/4	12.7	12.7	27	27	41.8	52.0	24.5
MDCT	18M-4	MDCT 18M-R4	18	1/4	15.1	7.1	27	30	36.7	46.9	24.5
MDCT	18M-6	MDCT 18M-R6	18	3/8	15.1	10.4	27	30	37.7	47.9	24.5
MDCT	18M-8	MDCT 18M-R8	18	1/2	15.1	12.7	27	30	41.7	51.9	24.5
MDCT	18M-12	MDCT 18M-R12	18	3/4	15.1	15.1	27	30	43.7	53.9	24.5
MDCT	18M-16	MDCT 18M-R16	18	1	15.1	15.1	36	30	48.3	58.5	24.5
MDCT	20M-8	MDCT 20M-R8	20	1/2	16.5	12.7	30	30	41.2	51.4	24.5
MDCT	20M-12	MDCT 20M-R12	20	3/4	16.5	16.5	30	30	43.2	53.4	24.5
MDCT	20M-16	MDCT 20M-R16	20	1	16.5	16.5	36	30	48.4	58.6	24.5
MDCT	22M-6	MDCT 22M-R6	22	3/8	18.3	10.4	32	32	37.2	47.4	26.1
		MDCT 22M-R8	22	1/2	18.3	12.7	32	32	41.2	51.4	26.1
MDCT	22M-12	MDCT 22M-R12	22	3/4	18.3	18.3	32	32	43.2	53.4	26.1
		MDCT 25M-R6	25	3/8	22.5	10.4	36	41	41.7	54.2	31.6
		MDCT 25M-R8	25	1/2	22.5	12.7	36	41	45.7	58.2	31.6
MDCT	25M-12	MDCT 25M-R12	25	3/4	22.5	18.3	36	41	47.7	60.2	31.6
MDCT	25M-16	MDCT 25M-R16	25	1	22.5	22.5	36	41	50.7	63.2	31.6