
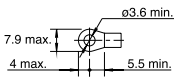
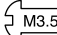
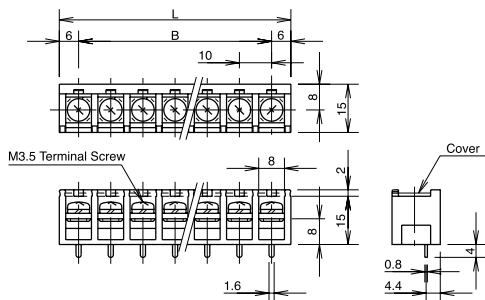


PC Board Terminal Blocks

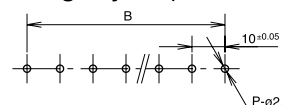
	Rear Barrier Terminal	Type No.	BP101V	Space-saving terminal block with rear barrier to ensure proper insulation distance • Barrier on the back of the body ensures insulation distance. • Space saving. • Optional cover fastens to the body without using mounting lug.
		Terminal Centers	10 mm	
		Insulation Voltage	250V	
		Rated Current	15A	
		Terminal Screw	M3.5	
		Tightening Torque	2 to 15	
	Applicable Crimping Terminal			

Terminal Centers 10 mm	BP101V-□	
-------------------------------	-----------------	---

• Dimensions



• PC Board Drilling Layout (P: No. of Poles)



• Dimension List (mm)

No. of Poles	2	3	4	5	6	7	8	9	10	11	12	13	14	15
L ±0.5	22	32	42	52	62	72	82	92	102	112	122	132	142	152
B ±0.5	10	20	30	40	50	60	70	80	90	100	110	120	130	140

Note: The optional cover is made to fit a 15-pole structure; cut the cover to fit the No. of Poles needed.

Accessories

	Name	Type No.	Specification	Applicable Terminal Block	Remarks
Type A	Hinged Terminal Cover	BPA-CA □ S	Terminal Centers 7.62 mm	All BP1 series (terminal centers 7.62 mm), 2 to 20-pole only All BP2 series (terminal centers 7.62 mm), 2 to 18-pole only (Note 1)	Use cover supports to hold the cover. The cover is hinged, for easy checking of terminal numbers regardless of whether the cover is open or not. A marking strip is supplied. Specify the number of poles in place of □ in the Type No. (Note 2)
	Material: Polycarbonate (transparent)	BPA-CA □	Terminal Centers 10 mm	All BP1 series (terminal centers 10 mm), 2 to 20-pole only All BP2 series (terminal centers 10 mm), 2 to 18-pole only (Note 1)	
	Cover Support	BPA-EA1	—	All BP1 series (terminal centers 7.62 mm or 10 mm), 2 to 20-pole All BP2 series (terminal centers 7.62 mm or 10 mm), 2 to 18-pole	
	Marking Strip	BPA-MA1S (12 poles) BPA-MA2S (20 poles) BPA-MA1 (12 poles) BPA-MA2 (20 poles)	Terminal Centers 7.62 mm Terminal Centers 10 mm	All BP1 series (terminal centers 7.62 mm), 2 to 20-pole only All BP2 series (terminal centers 7.62 mm), 2 to 18 pole only All BP1 series (terminal centers 10 mm), 2 to 20-pole only All BP2 series (terminal centers 10 mm), 2 to 18-pole only	
Type B	Removable Terminal Cover	BPA-C1S	Length: 244 Width: 12 Thickness: 1	BP201S, BP211S, BP221S, BP241S, and BP251S, 19 to 21-pole and 25-pole only All BP3 series (terminal centers 7.62 mm) (Note 1)	This cover is 32-poles long and can be cut as required. Cover length calculation (P: No. of poles) (P + 2) × 7.62 mm
	Break-off Notch	BPA-C1	Length: 270 Width: 13 Thickness: 1	BP201, BP211, BP212, BP221, BP225, BP226, BP241, and BP251, 19 to 21-pole only All BP3 series (terminal centers 10 mm) (Note 1)	This cover is 27-poles long and can be cut as required. Cover length calculation (P: No. of poles) (P + 2) × 10 mm
		BPA-C1M	Length: 256 Width: 13 Thickness: 1	All BP 2 and BP3 series (terminal centers 9.5 mm) (Note 1)	This cover is 27-poles long and can be cut as required. Cover length calculation (P: No. of poles) (P + 2) × 9.5 mm
	Material: Polycarbonate (transparent)	BPA-C1L	Length: 264 Width: 14 Thickness: 1	All BP 2 and BP3 series (terminal centers 11 mm) (Note 1)	This cover is 24-poles long and can be cut as required. Cover length calculation (P: No. of poles) (P + 2) × 11 mm