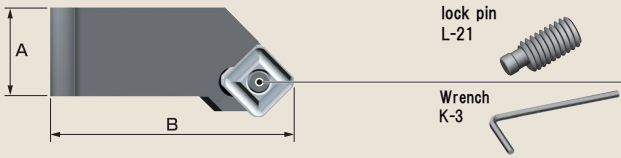
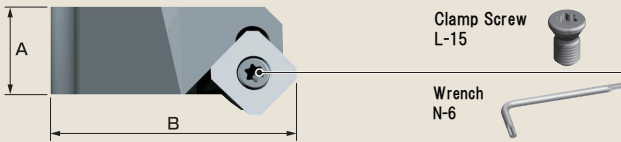


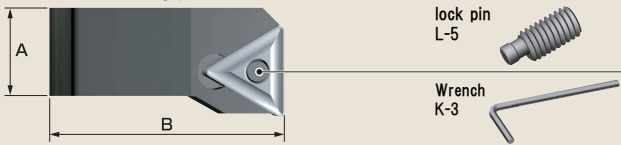
**4 NS type** Weight: 49g l (excluding Insert)



**5 PS type** Weight: 52g l (excluding Insert)



**6 NT type** Weight: 57g l (excluding Insert)



● Arm for New NICECUT cannot be used for Old model

**Arm**

Model No.	Fig.	Blades	Dimensions (mm)		Type	Quantity per box
			A	B		
AMNS-03	4	3	15.0	40.5	NS	(Three 1 set)
AMPS-03	5	3	15.0	41.8	PS	(Three 1 set)
AMNT-03	6	3	15.0	39.5	NT	(Three 1 set)
AMNS-06	4	6	15.0	40.5	NS	(Six 1 set)
AMPS-06	5	6	15.0	41.8	PS	(Six 1 set)
AMNT-06	6	6	15.0	39.5	NT	(Six 1 set)

※ arm(3pcs/set or 6pcs/set) is supplied per set. Individual pieces Arm cannot be supplied  
 ※ A set of arm will have to be purchased

**Cutting Conditions**

S32MOZ										
Material	Material Model	Feed per blade (fz)	Cutting speed (m / min)							
			NK2001	NK2050	AB01F	NK1010	NK2020	NK3030	NK6060	AC15T
General Steel		0.1~0.3	200~300	200~300	200~300		150~200	150~250	200~300	
Alloy Steel		0.1~0.3	200~250	200~250	200~250		150~200	150~250	200~300	
Stainless Steel		0.1~0.25					120~180	150~200	150~250	150
Aluminum, Resin, Brass										
Castings		0.1~0.3	200~250 *FCD		200~250 *FCD	150~200				

● Our original Insert have "Chamfered nose" which ensure a good surface finishing even feed speed per blade are increased  
 ● Yellow marked rate is recommended for the workpiece listed

T33MOR							
Material	Material Model	Feed per blade (fz)	Cutting speed (m / min)				
			NK2001	NK1010	NK2020	NK3030	NK6060
General Steel		0.1~0.2	200~220		150~180	150~220	
Alloy Steel		0.1~0.2	200~220		150~180	150~220	
Stainless Steel		0.1~0.15			120~160	150~180	150~200
Aluminum, Resin, Brass							
Castings		0.1~0.2	200~220 *FCD	150~180			

● Original Insert breaker realize a sharp processing. Insert nose chamfered minimize cutting resistance.  
 ● Yellow marked rate is recommended for the workpiece listed

T33GUR								
Material	Material Model	Feed per blade (fz)	Cutting speed (m / min)					
			NK2001	NK1010	NK2020	NK3030	NK5050	NK6060
General Steel		0.08~0.2	200~220		150~180			
Alloy Steel		0.08~0.2	200~220		150~180			
Stainless Steel		0.08~0.2			120~180	150~180	150~220	150~220 *SUS316
Aluminum, Resin, Brass		0.08~0.3		250~750			200~750	200~750
Castings		0.08~0.2	200~220 *FCD					150~220

● Original Insert breaker realize a sharp processing. Insert nose chamfered minimize cutting resistance. Suitable for thin materials(easy to deform or chatter) processing  
 ● Yellow marked rate is recommended for the workpiece listed

**Base**

**3Blade**

φ100mm  
φ110mm

NK32078-03  
Weight: 1,678g

**3Blade**

φ130mm  
φ140mm

NK32108-03  
Weight: 2,908g

**3Blade**

φ150mm  
φ160mm

NK32128-03  
Weight: 2,358g

**6Blade**

φ100mm  
φ110mm

NK32078-06  
Weight: 1,556g

**6Blade**

φ130mm  
φ140mm

NK32108-06  
Weight: 2,826g

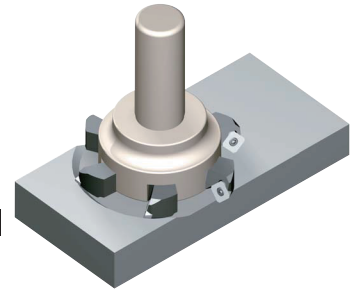
**Processing Example**

**[Face Milling]**

- Body : NKP32-100S-06
- Insert : S3H3MNZ NK2020
- Material.....SUS304
- Work length.....700mm
- Rotation Speed.....500r.p.m
- Feed (X-axis).....300mm
- Cutting Depth.....1mm

**Result**

Good!  
No secondary burrs and no chattering process



S32GUR										
Material	Material Model	Feed per blade (fz)	Cutting speed (m / min)							
			NK2001	NK1010	NK2020	NK3030	NK5050	NK6060	NK8080	DIA
General Steel		0.08~0.2	200~300		150~200					
Alloy Steel		0.08~0.2	200~250		150~200					
Stainless Steel		0.08~0.2			120~180	150~200		150~250	150~250 *SUS316	
Aluminum, Resin, Brass		0.08~0.3		250~800			200~800	200~800	500~2,000	
Castings		0.08~0.2	200~250 *FCD	100~150						

● Original Insert breaker realize a sharp processing. Insert nose chamfered minimize cutting resistance. Suitable for thin materials(easy to deform or chatter) processing  
 ● Yellow marked rate is recommended for the workpiece listed

T33MOZ							
Material	Material Model	Feed per blade (fz)	Cutting speed (m / min)				
			NK2001	NK1010	NK2020	NK3030	NK6060
General Steel		0.1~0.3	200~220		150~180	150~200	
Alloy Steel		0.1~0.3	200~220		150~180	150~200	
Stainless Steel		0.1~0.25			120~160	120~180	150~200
Aluminum, Resin, Brass							
Castings		0.1~0.3	200~220 *FCD	150~180			

● Our original Insert have "Chamfered nose" which ensure a good surface finishing even feed speed per blade are increased  
 ● Yellow marked rate is recommended for the workpiece listed

S3H3MNZ						S3H3GNZ	
Material	Material Model	Feed per blade (fz)	Cutting speed (m / min)				
			NK2001	NK2020	NK6060	AC15D	NK1010
General Steel		0.08~0.2	200~300	150~200			
Alloy Steel		0.08~0.2	200~300	150~200			
Stainless Steel		0.1			150~250	150	
Aluminum, Resin, Brass		0.1~0.2					500~1,000
Castings							500~1,000

● Our original Insert have "Chamfered nose" which ensure a good surface finishing even feed speed per blade are increased  
 ● Yellow marked rate is recommended for the workpiece listed



Insert to P.51