

# 1625-series For 18-wide groove

(Lowered by means of mold weight or forced exhaust)



Sizes other than shown below are also available. Please specify the details in the inquiry sheet of P30.

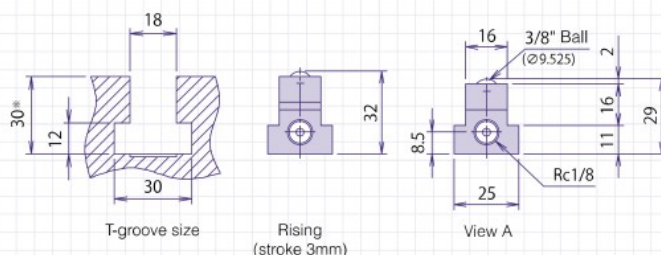
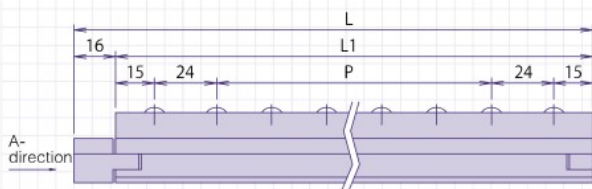
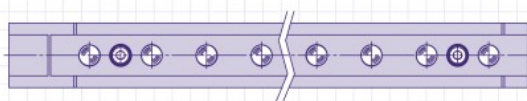


AFU-1625-200



AFU-1625-600

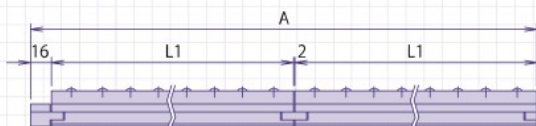
## ■ AFU-1625 (For 18-wide groove)



※If the T-groove is deeper than 30mm, you need to adjust the height by installing a spacer underneath the AFU. In such case, make sure that the ball extrudes 2mm from the upper surface of the bolster when the AFU rises. We can provide various types of spacers.

Calculation formula of full length  $A=14+(\text{Sum of } L1) + (2 \times \text{Number of connections})$

※The same series can be connected with each other.



(Unit:mm)

Model	Body size (mm)			Weight (kg)	Relation of air pressure and load capacity kN (kgf)			
	L	L1	P		One piece of AFU			
					Operating air pressure MPa (kgf/cm <sup>2</sup> )			
AFU-1625-200	200	184	$5 \times P21.2 = 106$	0.8	0.30 (3.1)	0.40 (4.1)	0.50 (5.1)	0.60 (6.1)
AFU-1625-600	600	584	$23 \times P22 = 506$	2.2	1.24 (126.0)	1.65 (170.3)	2.06 (210.1)	2.47 (251.9)

## Easy to use without the need for large-scale construction



The T-groove type can be used by inserting into existing T-groove without the need for square groove processing.

The height and width are adjustable, saving time and cost for machine processing.

If the T groove is too deep, please insert a spacer (shim) in the part to adjust the height before use.

(Common to T-groove insertion type.) ※Shims are available from us (paid)