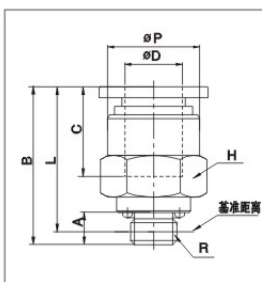
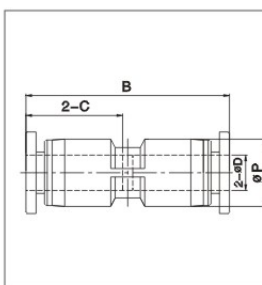


EPCC 螺纹直通  
Straight



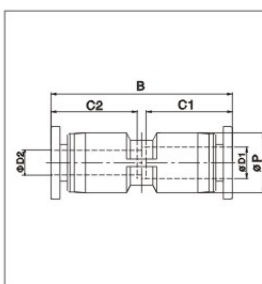
型号/ MODEL	$\phi D$	R	A	B	L	$\phi P$	C	H
EPC3-M3C	3	M3X0.5	3.0	14.6	13.5	5.5	10.6	5.5
EPC3-M5C		M5X0.8	3.5	15.3	14.0	5.5	10.6	8.0
EPC3-M6C		M6X1	4.5	15.9	14.2	5.5	10.6	9.0
EPC4-M3C	4	M3X0.5	3.0	16.4	15.6	8.0	11	8.0
EPC4-M5C		M5X0.8	3.5	16.9	15.6	8.0	11	8.0
EPC4-M6C		M6X1	4.5	18.2	15.8	8.0	11	9.0
EPC6-M5C	6	M5X0.8	3.5	17.8	16.1	10.0	12.5	10.0
EPC6-M6C		M6X1	3.9	18.7	16.3	10.0	12.5	10.0
EPC6-01C		R1/8	8.0	19.1	16.8	10.0	12.5	10.0

EPUC 直通  
Union Straight



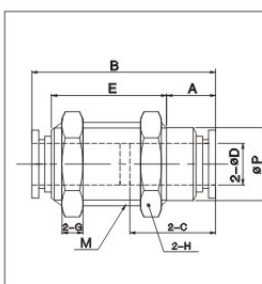
型号/ MODEL	$\phi D$	B	$\phi P$	C
EPU3C	3	19.8	6.2	9.3
EPU4C	4	25.2	8.1	12
EPU6C	6	26.3	10.7	12.4

EPGC 减径直通  
Diff.Diam.Union Straight



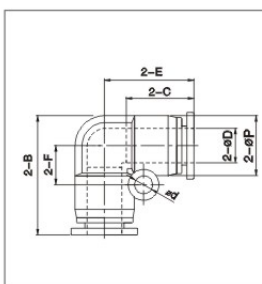
型号/ MODEL	$\phi D1$	B	$\phi P$	C1	$\phi D2$	C2
EPG4-3C	4	24.9	8.1	12	3	9.3
EPG6-4C	6	26.1	10.7	12.4	4	12

EPMC 隔板直通  
Bulkhead Union



型号/ MODEL	$\phi D$	M	B	$\phi P$	C	A	E	对边H	G
EPM3C	3	M8X0.75	22	5.5	10.6	5.6	13.0	10.0	2.3
EPM4C	4	M10X1	25.2	8.0	12.0	7.0	13.5	12.0	3.0
EPM6C	6	M12X1	26.9	10.0	12.6	7.1	15.2	14.0	4.0

EPVC L型二通  
Union Elbow



型号/ MODEL	$\phi D$	B	$\phi P$	C	E	$\phi d$	F
EPV3C	3	14.5	6.2	9.3	11.4	3.2	4.7
EPV4C	4	18.3	8.1	12.0	14.2	3.2	6.0
EPV6C	6	21.8	10.7	12.4	16.4	3.2	7.0



迷你管接头