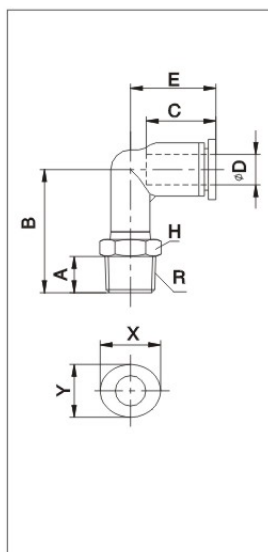
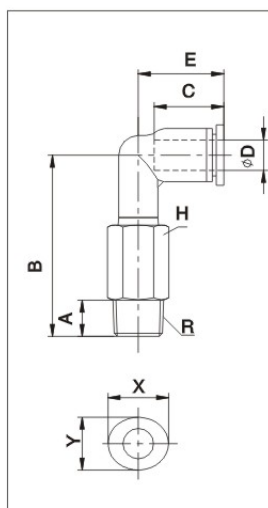


**EPL/APL/ZPL L型螺纹三通
Male Elbow**



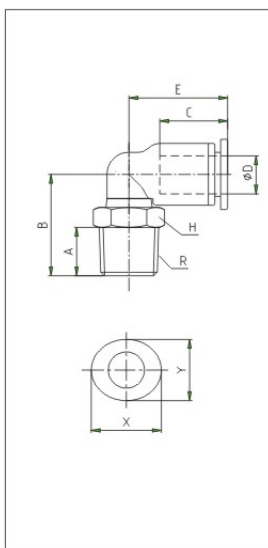
型号/MODEL	ϕD	R	A	B	E	H	X	Y	C
EPL4-M5	4	M5	4	17.5	17.5	8	11.9	10.5	14.9
EPL4-01	4	R1/8	7.5	22.5	18.8	10	11.9	10.5	14.9
EPL4-02	4	R1/4	9.5	24	18.8	14	11.9	10.5	14.9
EPL4-03	4	R3/8	10.5	25.5	18.8	17	11.9	10.5	14.9
EPL6-M5	6	M5	4	17.5	18.8	8	13.9	12.5	16
EPL6-01	6	R1/8	7.5	24.7	20	10	13.9	12.5	16
EPL6-02	6	R1/4	9.5	26.2	20	14	13.9	12.5	16
EPL6-03	6	R3/8	10.5	27.7	20	17	13.9	12.5	16
EPL6-04	6	R1/2	13.5	30.7	20	21	13.9	12.5	16
EPL8-01	8	R1/8	7.5	30.4	22.5	10	15.9	13.9	18.3
EPL8-02	8	R1/4	9.5	29	22.5	14	15.9	13.9	18.3
EPL8-03	8	R3/8	10.5	30.5	22.5	17	15.9	13.9	18.3
EPL8-04	8	R1/4	13.5	33.5	22.5	21	15.9	13.9	18.3
EPL10-01	10	R1/8	7.5	33.8	26.9	17	19.5	17	21
EPL10-02	10	R1/4	9.5	35.8	26.9	17	19.5	17	21
EPL10-03	10	R3/8	10.5	34.3	26.9	17	19.5	17	21
EPL10-04	10	R1/2	13.5	37.3	26.9	21	19.5	17	21
EPL12-01	12	R1/8	7.5	36	28.5	17	23	20.5	22.6
EPL12-02	12	R1/4	9.5	38	28.5	17	23	20.5	22.6
EPL12-03	12	R3/8	10.5	36.5	28.5	17	23	20.5	22.6
EPL12-04	12	R1/2	13.5	39.5	28.5	21	23	20.5	22.6
EPL16-03	16	R3/8	10.5	42.7	33.5	20	27	24	25
EPL16-04	16	R1/2	13.5	45.7	33.5	21	27	24	25

**EPLL/APLL L型加长螺纹三通
Male Long Elbow**



型号/MODEL	ϕD	R	A	B	E	H	X	Y	C
EPL4-01	4	R1/8	7.5	36.5	18.8	10	11.9	10.5	14.9
EPL4-02	4	R1/4	9.5	38	18.8	14	11.9	10.5	14.9
EPL4-03	4	R3/8	10.5	39.5	18.8	17	11.9	10.5	14.9
EPL6-01	6	R1/8	7.5	38.7	20	10	13.9	12.5	16
EPL6-02	6	R1/4	9.5	40.2	20	14	13.9	12.5	16
EPL6-03	6	R3/8	10.5	41.7	20	17	13.9	12.5	16
EPL6-04	6	R1/2	13.5	44.7	20	21	13.9	12.5	16
EPL8-01	8	R1/8	7.5	46.2	22.5	10	15.9	13.9	18.3
EPL8-02	8	R1/4	9.5	44.8	22.5	14	15.9	13.9	18.3
EPL8-03	8	R3/8	10.5	46.3	22.5	17	15.9	13.9	18.3
EPL8-04	8	R1/4	13.5	49.3	22.5	21	15.9	13.9	18.3
EPL10-01	10	R1/8	7.5	55.9	26.9	17	19.5	17	21
EPL10-02	10	R1/4	9.5	57.9	26.9	17	19.5	17	21
EPL10-03	10	R3/8	10.5	56.4	26.9	17	19.5	17	21
EPL10-04	10	R1/2	13.5	59.4	26.9	21	19.5	17	21
EPL12-01	12	R1/8	7.5	58.1	28.5	17	23	20.5	22.6
EPL12-02	12	R1/4	9.5	60.1	28.5	17	23	20.5	22.6
EPL12-03	12	R3/8	10.5	58.6	28.5	17	23	20.5	22.6
EPL12-04	12	R1/2	13.5	61.6	28.5	21	23	20.5	22.6
EPL16-03	16	R3/8	10.5	69.2	33.5	20	27	24	25
EPL16-04	16	R1/2	13.5	72.2	33.5	21	27	24	25

**快速接头 EGPL/AGPL L型螺纹三通
Male Elbow**



型号/MODEL	A	B	C	ϕD	E	H	R	X	Y
EGPL4-M5	4	18.6	14.9	4	18.8	8	M5	11.9	10.5
EGPL4-01	7.5	18.5	14.9	4	18.8	10	R1/8	11.9	10.5
EGPL4-02	9.5	20	14.9	4	18.8	14	R1/4	11.9	10.5
EGPL4-03	10.5	21.5	14.9	4	18.8	17	R3/8	11.9	10.5
EGPL6-M5	4	19.6	16	6	20.1	8	M5	13.9	12.5
EGPL6-01	7.5	19.5	16	6	20.1	10	R1/8	13.9	12.5
EGPL6-02	9.5	21	16	6	20.1	14	R1/4	13.9	12.5
EGPL6-03	10.5	22.5	16	6	20.1	17	R3/8	13.9	12.5
EGPL6-04	13.5	25.5	16	6	20.1	21	R1/2	13.9	12.5
EGPL8-01	7.5	22.9	18.3	8	22.5	10	R1/8	15.9	13.9
EGPL8-02	9.5	21.5	18.3	8	22.5	14	R1/4	15.9	13.9
EGPL8-03	10.5	23	18.3	8	22.5	17	R3/8	15.9	13.9
EGPL8-04	13.5	26	18.3	8	22.5	21	R1/2	15.9	13.9
EGPL10-01	7.5	24.3	21	10	26.9	17	R1/8	19.5	17
EGPL10-02	9.5	26.3	21	10	26.9	17	R1/4	19.5	17
EGPL10-03	10.5	24.8	21	10	26.9	17	R3/8	19.5	17
EGPL10-04	13.5	27.8	21	10	26.9	21	R1/2	19.5	17
EGPL12-01	7.5	25.8	22.7	12	28.4	17	R1/8	23	20.5
EGPL12-02	9.5	27.8	22.7	12	28.4	17	R1/4	23	20.5
EGPL12-03	10.5	26.3	22.7	12	28.4	17	R3/8	23	20.5
EGPL12-04	13.5	29.3	22.7	12	28.4	21	R1/2	23	20.5
EGPL16-03	10.5	33.7	25	16	33.5	20	R3/8	27	24
EGPL16-04	13.5	36.7	25	16	33.5	21	R1/2	27	24