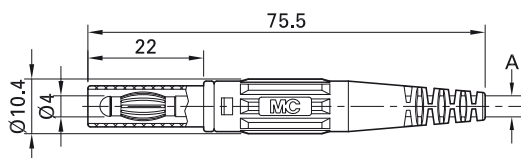


Plug XL-410

In-line, Ø 4 mm, with spring-loaded MULTILAM, for self-assembly of test leads.

With rigid insulating sleeve. **Screw connection.**



Order No.	Type	Rated voltage/current	Cable (A)		*Standard colors
66.9196-*	XL-410	1000 V, CAT II / 32 A 600 V, CAT III / 32 A	max. Ø 3.9 mm max. 2.5 mm ²	Ni	21 22 23 24 25 26 27 29



Assembly instructions MAH503

www.staubli.com/electrical



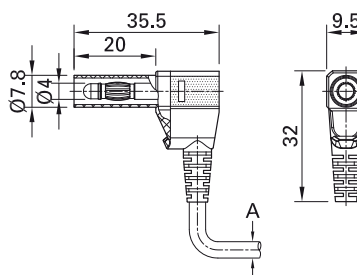
Optional colors 20

Further information, page 6

Plug SLS425-SW...

Right-angled, Ø 4 mm, with spring-loaded MULTILAM, for self-assembly of test leads. With rigid insulating sleeve. Nickel-plat-

ed and gold-plated versions available. **Solder connection.**



Order No.	Type	Rated voltage/current	Cable (A)		*Standard colors
22.2667-*	SLS425-SW	500 V, CAT II / 32 A	max. 3.9 mm max. 2.5 mm ²	Ni	20 21 22 23 24 25 26
22.2668-*	SLS425-SW/A	500 V, CAT II / 32 A	max. 3.9 mm max. 2.5 mm ²	Au	21 22

Component parts

22.2370-*	KT425-SW	Insulator (*Standard colors see SLS425-SW)
22.1042	LS425-SW	Plug suitable for: SLS425-SW
22.1045	LS425-SW/A	Plug suitable for: SLS425-SW/A



Assembly instructions MA107

www.staubli.com/electrical



Optional colors 20 23 24 25 26

Further information, page 6